

ELFI
ELECTRONICS







COMPANY OVERVIEW

Elfi Srl was founded in 2004 in Pistoia as a laboratory for the design and production of electronic equipment for the railway and tramway sector.

We are a cutting-edge company that produces highly specialized technology with industrial quality, maintaining in its processes the care of an artisan workshop: focused on detail and careful to find innovative solutions customized to the needs of its customers.

Thanks to investments in cutting-edge machinery, the constant training of our staff and the adoption of effective management tools, Elfi Srl aims to consolidate its position on the railway and tram market and to expand its presence in the other sectors that can benefit from its solutions. Our goal is to continue to combine high quality production for our customers with the research and development that is the beating heart of our technological passion.

We like to find solutions to the challenges facing our customers. We love to approach our projects with versatility, sure to find creative and reliable solutions even to unconventional needs. We have know-how and experience and we always seek absolute quality: we preserve the agility of the small business, but combined with production capacity with industrial standards. We are a laboratory of innovation, an artisan technological workshop.

FIELDS OF APPLICATION



RAILWAY



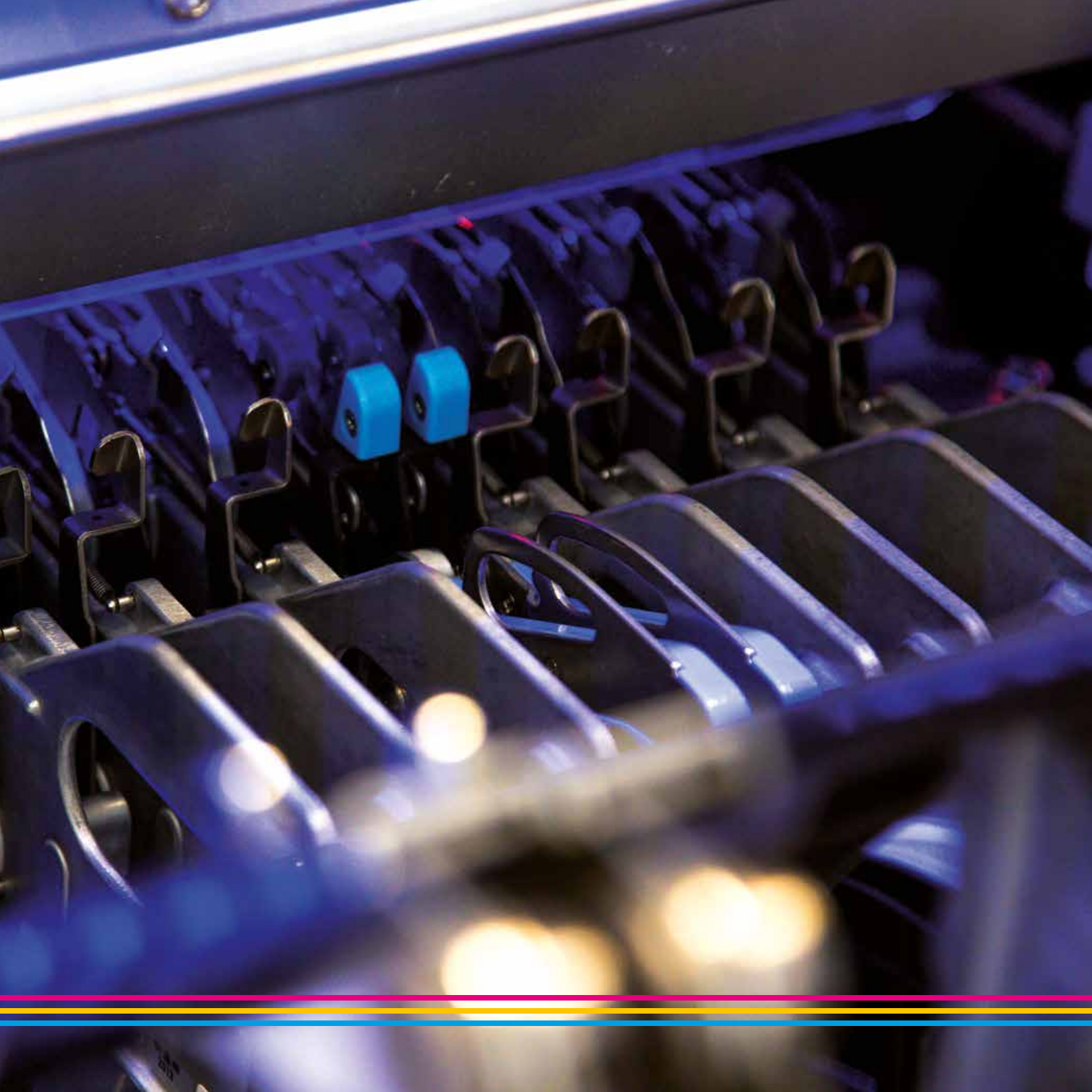
AUTOMOTIVE



NAVAL

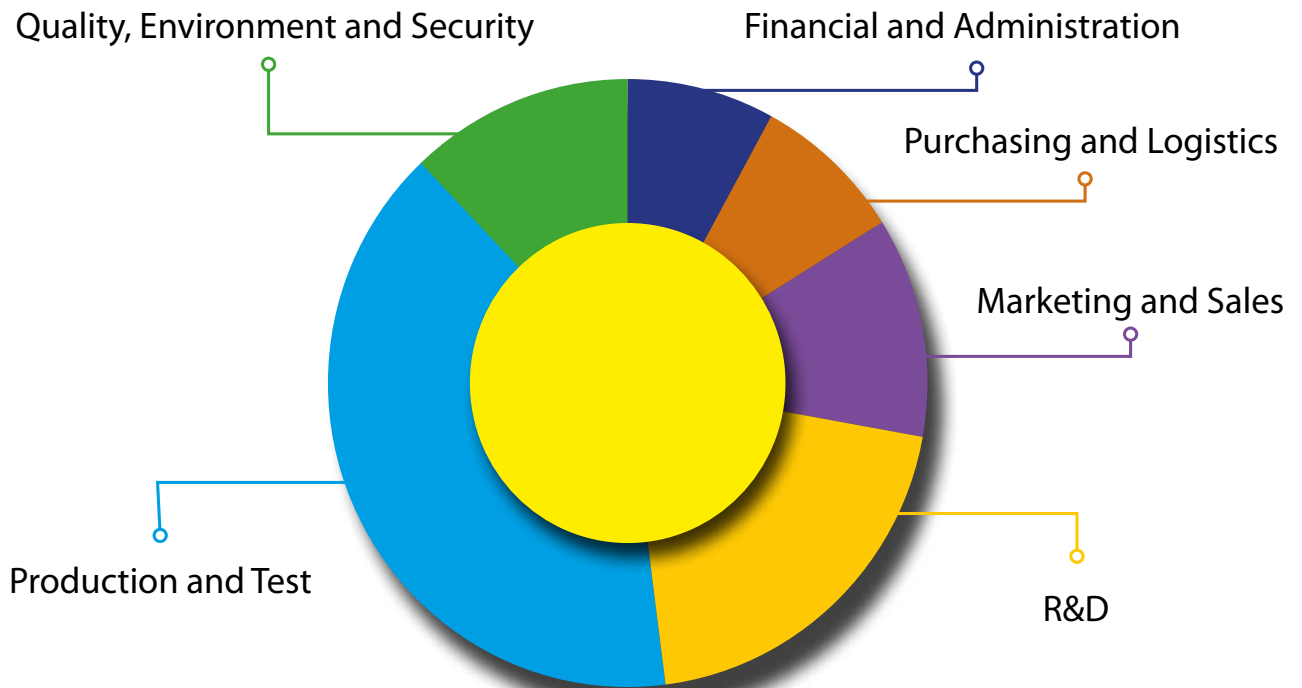


ELECTROMEDICAL

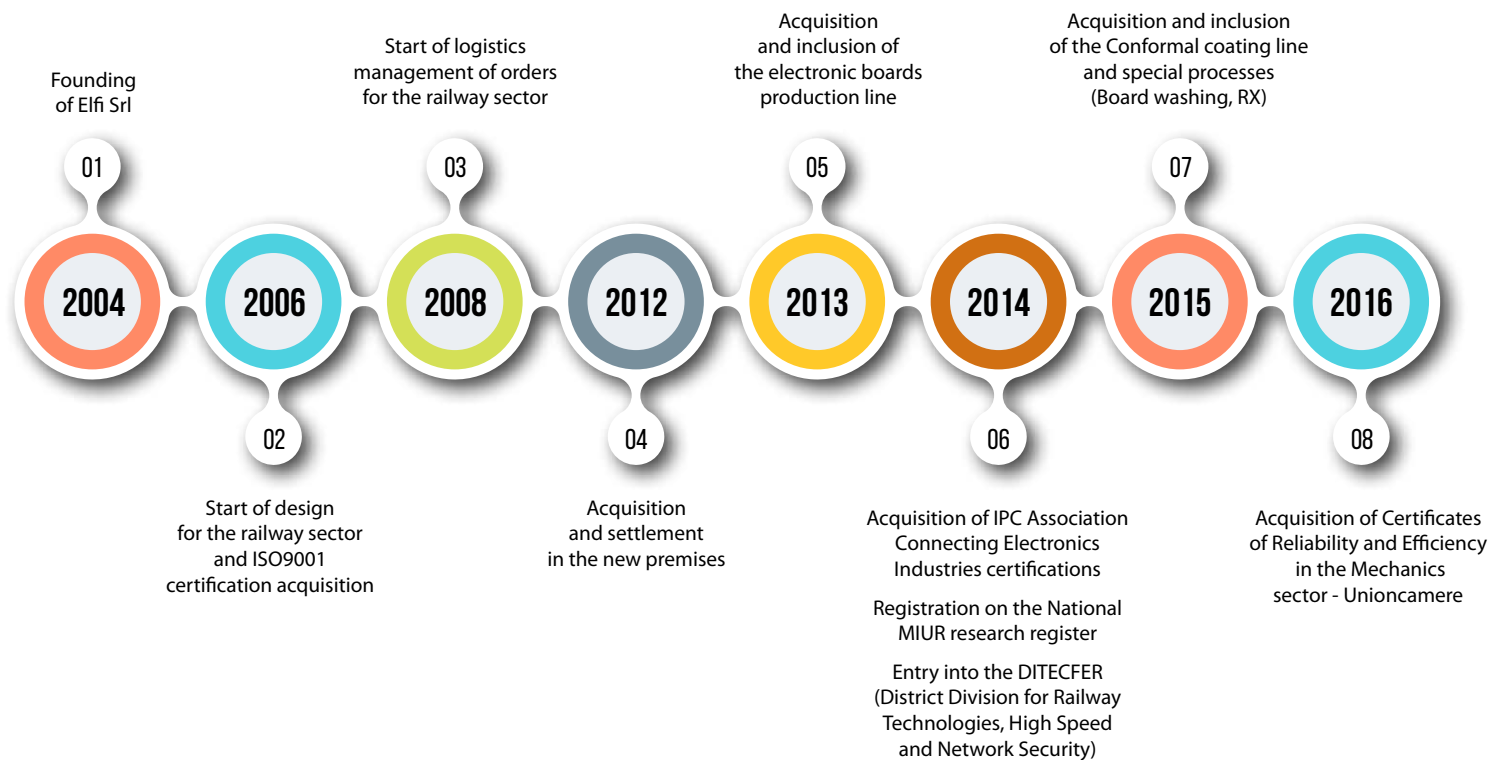




PERSONNEL SUBDIVISION BY AREA

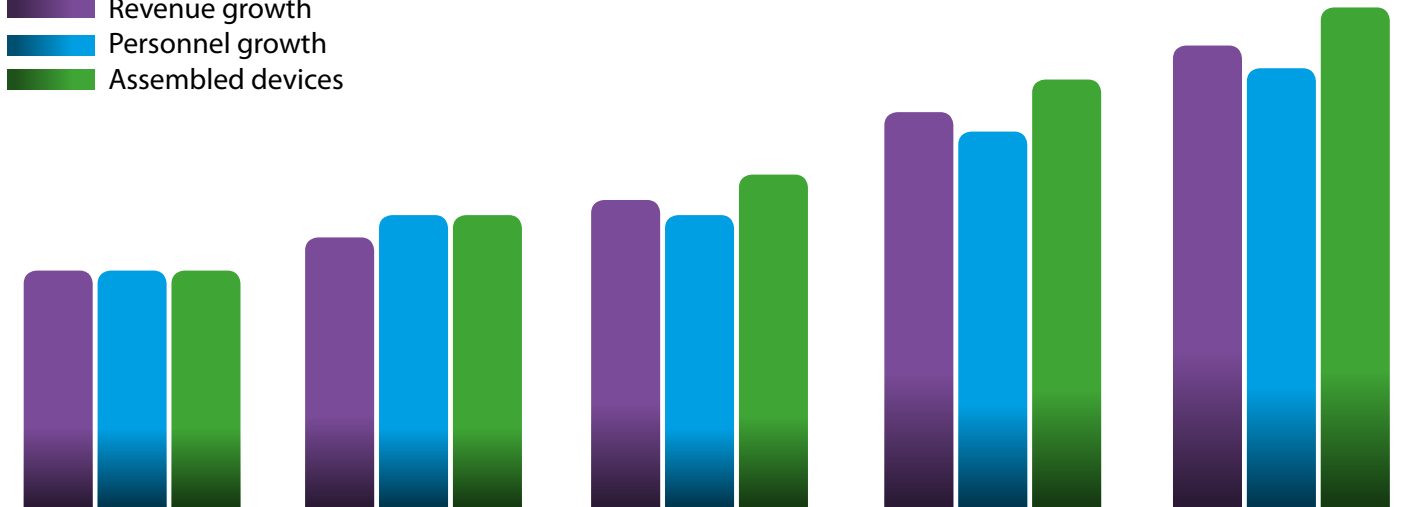


TIMELINE 2004-2016



GROWTH ELFI SRL 2017 - 2021

■ Revenue growth
■ Personnel growth
■ Assembled devices



2017

Acquisition of IRIS certification (International Railway Industry Standard) Certification rules: 2017 and based on ISO / TS 22163: 2017

Acquisition of the "Requirements for fire behavior of materials and components" certificate

Acquisition of the Certificate of Legality Certificate "Authority of Competition and Market"

2018

Acquisition of ISO 14001: 2015 Certification Environmental Management System
 Acquisition of BS OHSAS 18001: 2017 Certification Occupational health and safety management system

Introduction of new SAP ERP Business One

2019

Elfi Industry 4.0: launch of industrial automation, interconnection, integration of new production technologies aimed at improving working conditions, creating new business models and improving both productivity and the production quality of the plants

2020

Accreditation Scheme SAFERAIL® for EN 45545-2 Railway applications. Fire protection on railway vehicles. Requirements for fire behaviour of materials and components

2021

ISO 45001:2018 certification



SERVICES

DESIGN

Feasibility analysis, specific acquisition and analysis, development and creation of hardware and software, product prototyping and engineering.

ASSEMBLY

Qualified personnel with IPC certifications manage our fully automatic, highly efficient, dynamic and flexible SMT-THT assembly line.

CONFORMAL COATING

Complete TTns line for conformal coating of electronic boards. The plant guarantees the maximum support in every phase of the coating process, from the deposit of the product to its complete polymerization.

X-RAY INSPECTION

Service that makes it possible to control the finished product thanks to its very powerful focus and innovative image processing software. The real-time event log guarantees the traceability of the product.

BOARD WASHING

Automatic cleaning system for foils and electronic boards, one of the fundamental parameters for quality silk-screen printing.

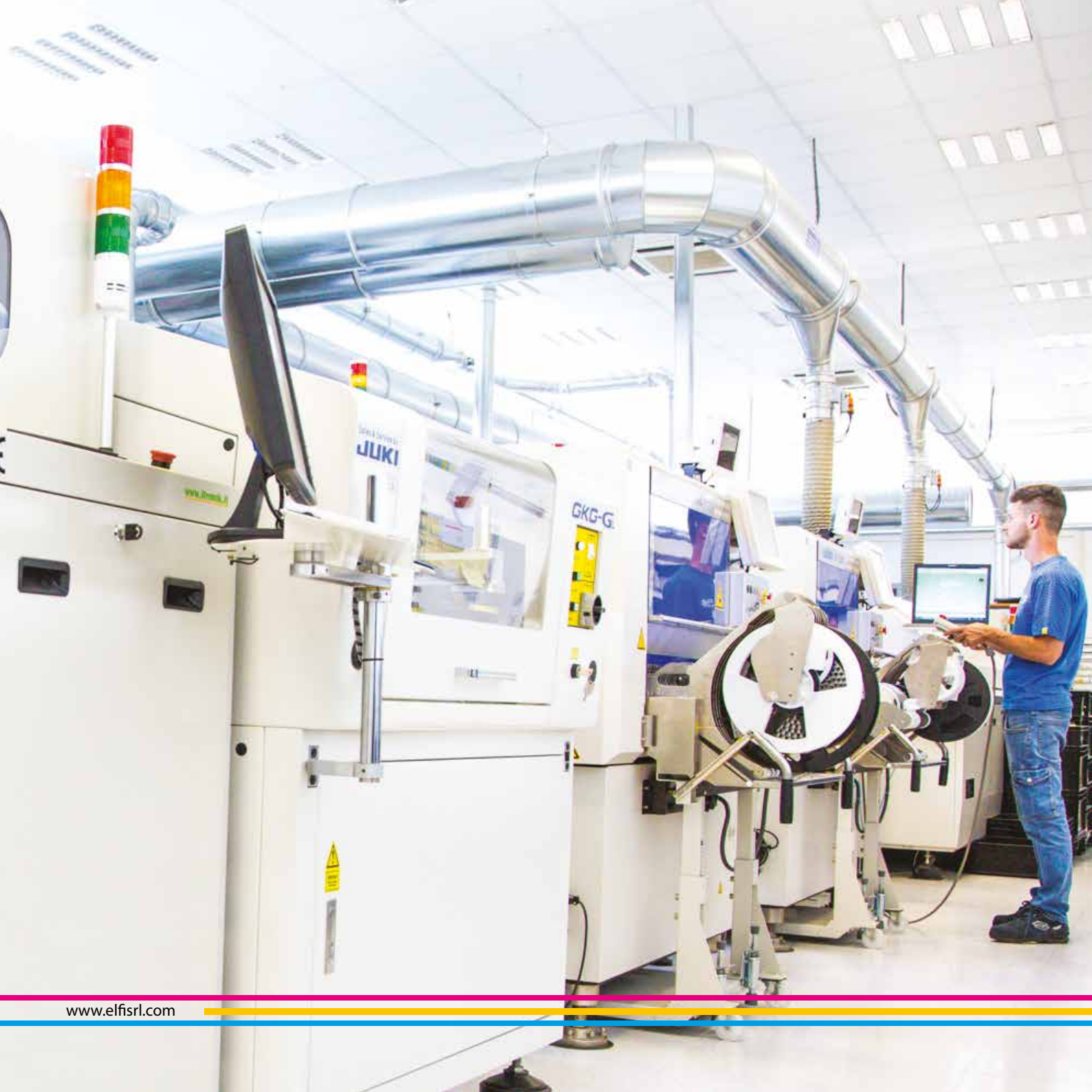
LOGISTICS MANAGEMENT SUPPLIES

We deal with the management of purchases, materials, warehousing and stock consignment.

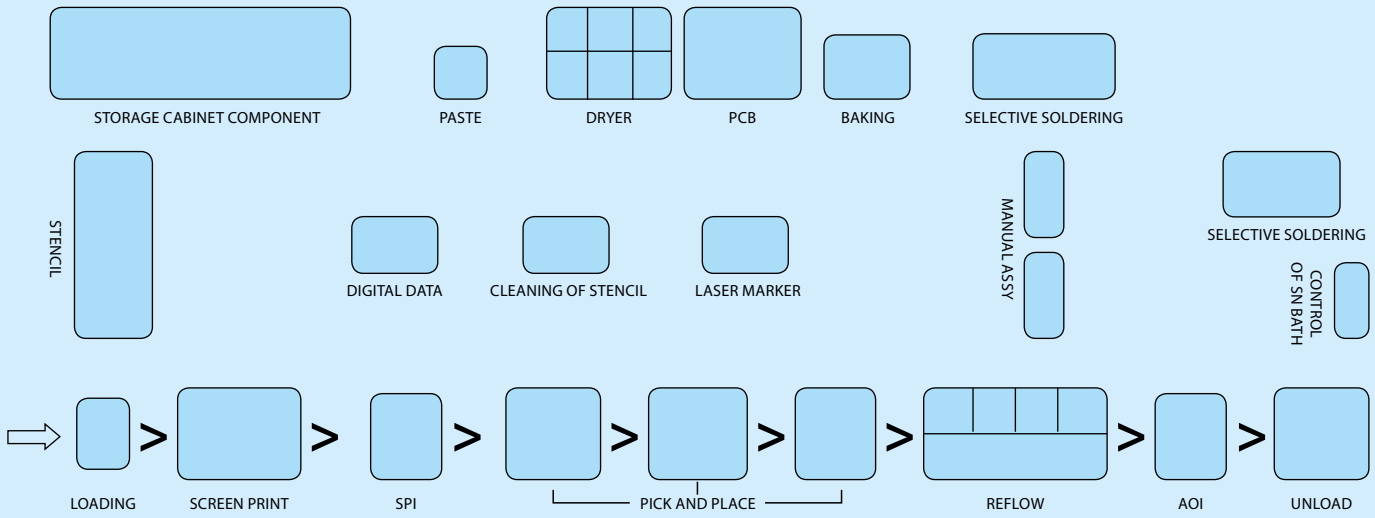
AFTER-SALES SERVICE

Management of warranty repairs, management of obsolescence, analysis of the interchangeability of obsolete components, re-engineering or re-design of products.

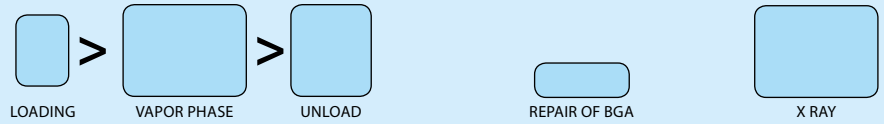




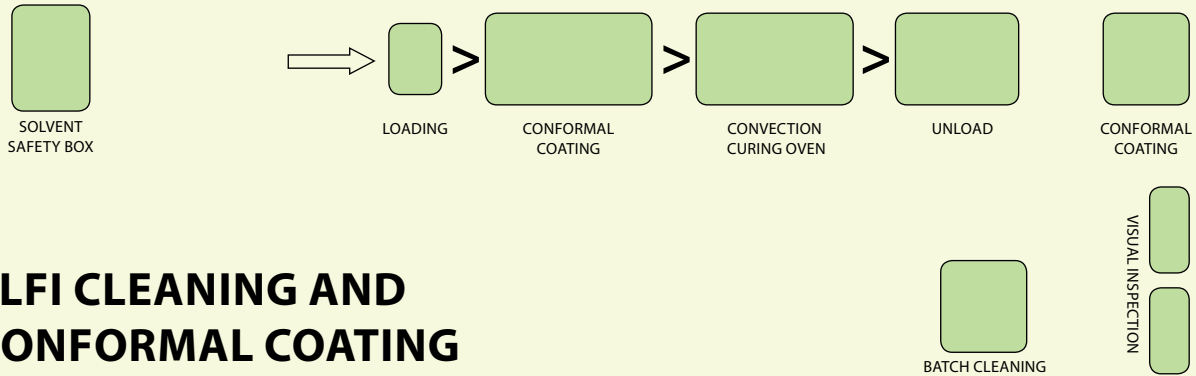
PRODUCTION PROCESSES



ELFI SOLDERING AND ASSEMBLY



ELFI CLEANING AND CONFORMAL COATING



CERTIFICATIONS

ELFI Srl is an ISO 9001:2015 certified company for the design and production of electrical and electronic equipment.

We use external accredited laboratories for the certification of our products.

Continuous investment in the certifications of our staff enables us to offer our customers high level skills and services.



Member

IPC-7711/7721
Certified IPC Trainer



Member

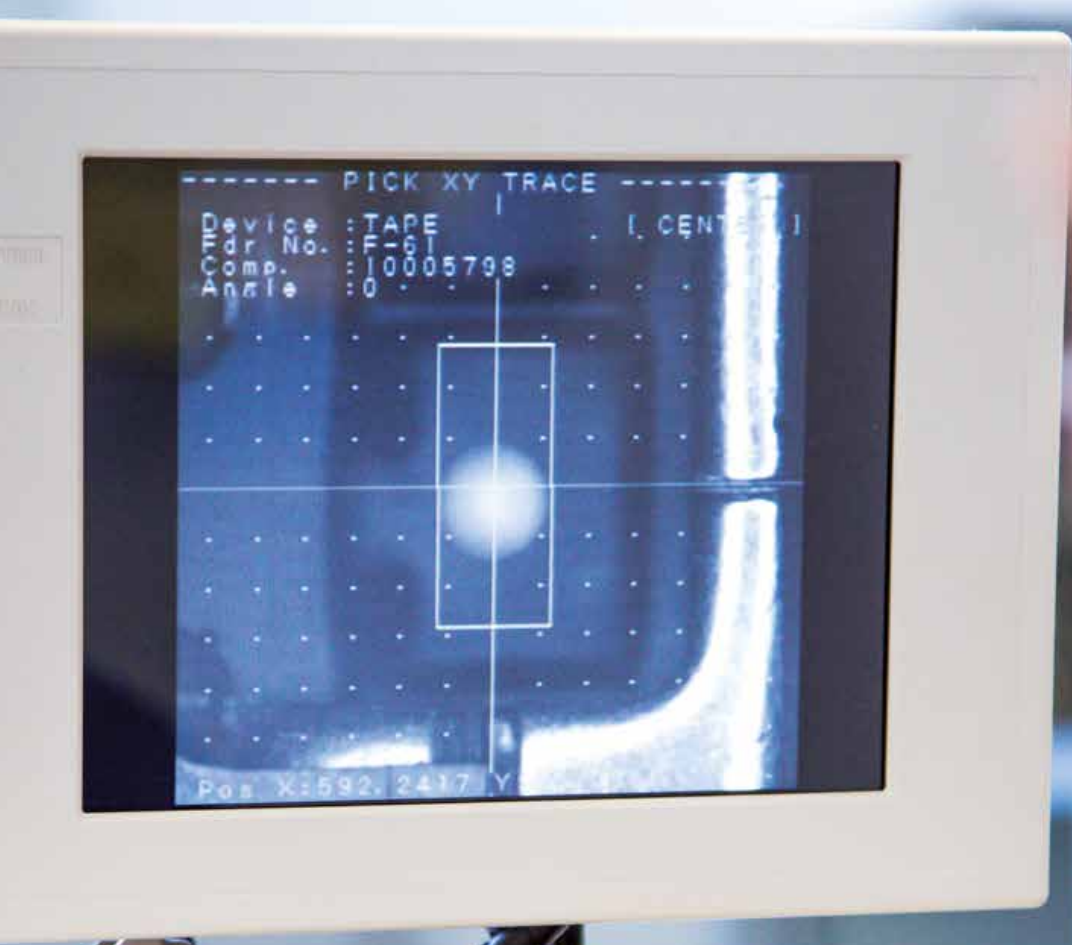
IPC-A-610
Certified IPC Trainer



Member

IPC-J-STD-001
Certified IPC Trainer





----- PICK XY TRACE -----
Device : TAPE [CENTER]
Pdr No. : F-61
Comp. : 10005798
name : 0

Pos X:592.2417 Y:



Program Editor - 2000Series - C20101012.rst

pick position tracking...

Mode Manual Package Foot Bot

