

The logo for ELFA Electronics features the letters 'ELFA' in a tall, white, sans-serif font. Each letter has a vertical bar on its right side, which is decorated with a series of small, colorful rectangular segments in red, yellow, cyan, and blue.

ELFA

ELECTRONICS

A horizontal line composed of several overlapping, thin, colorful bars in shades of cyan, yellow, red, and blue, positioned above the tagline.

WE MAKE, YOU MOVE





COMPANY OVERVIEW

Elfi Srl was founded in 2004 in Pistoia as a laboratory for the design and production of electronic equipment for the railway and tramway sector.

We are a cutting-edge company that produces highly specialized technology with industrial quality, maintaining in its processes the care of an artisan workshop: focused on detail and careful to find innovative solutions customized to the needs of its customers.

Thanks to investments in cutting-edge machinery, the constant training of our staff and the adoption of effective management tools, Elfi Srl aims to consolidate its position on the railway and tram market and to expand its presence in the other sectors that can benefit from its solutions. Our goal is to continue to combine high quality production for our customers with the research and development that is the beating heart of our technological passion.

We like to find solutions to the challenges facing our customers. We love to approach our projects with versatility, sure to find creative and reliable solutions even to unconventional needs. We have know-how and experience and we always seek absolute quality: we preserve the agility of the small business, but combined with production capacity with industrial standards. We are a laboratory of innovation, an artisan technological workshop.

FIELDS OF APPLICATION



RAILWAY



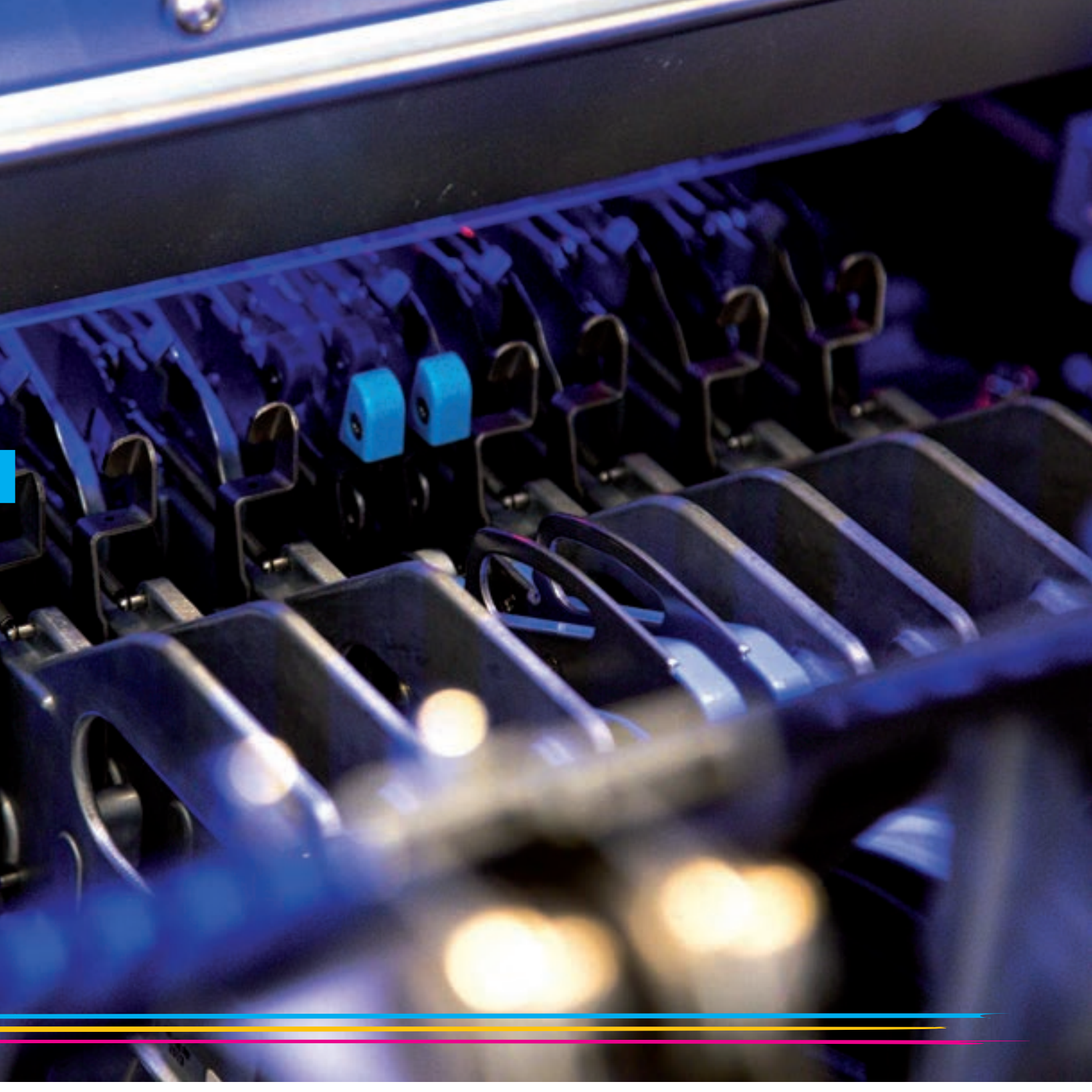
AUTOMOTIVE



NAVAL

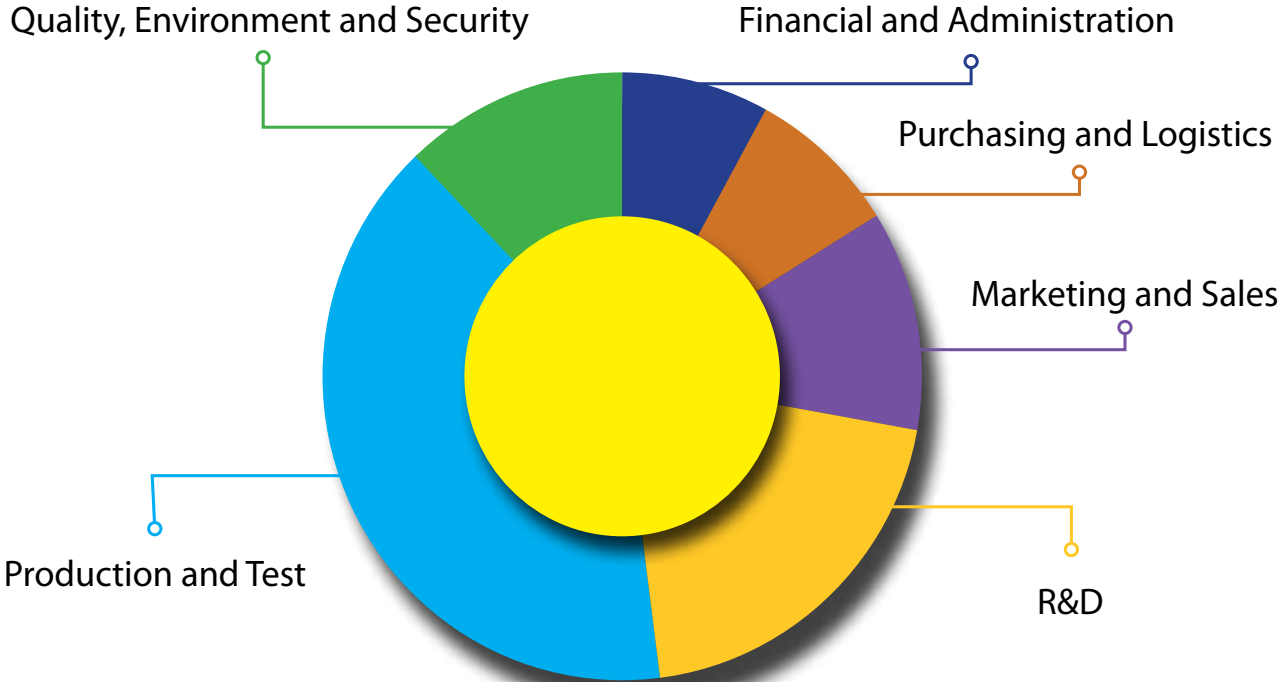


ELECTROMEDICAL

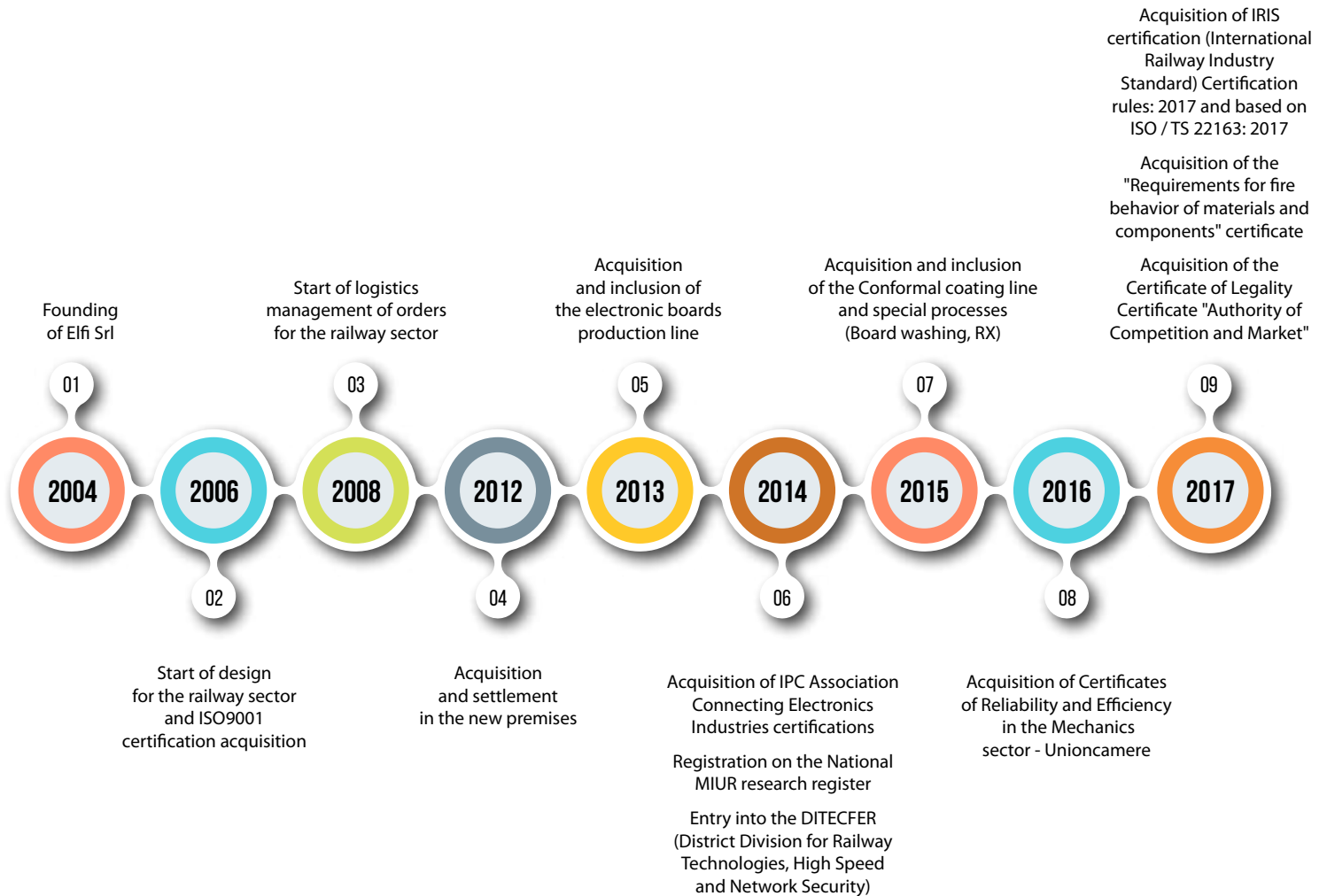




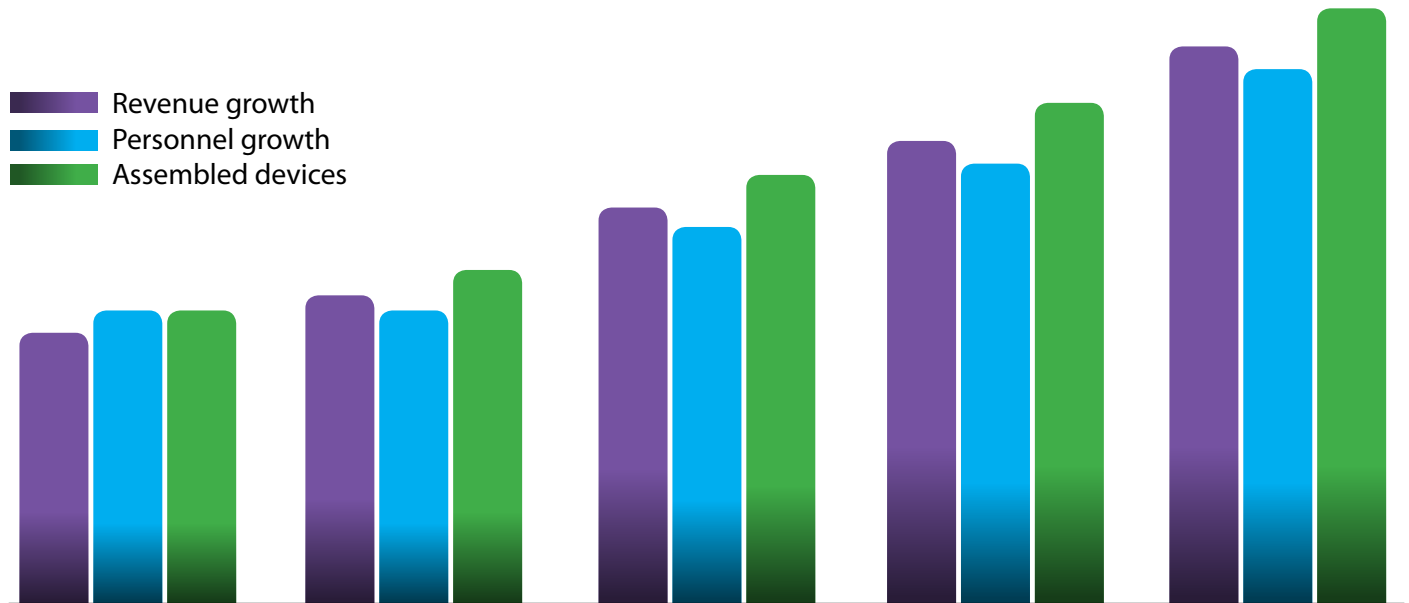
PERSONNEL SUBDIVISION BY AREA



TIMELINE 2004-2017



GROWTH ELFI SRL 2018 - 2022



2018

Acquisition of ISO 14001: 2015 Certification Environmental Management System
 Acquisition of BS OHSAS 18001: 2017 Certification Occupational health and safety management system
 Introduction of new SAP ERP Business One

2019

Elfi Industry 4.0: launch of industrial automation, interconnection, integration of new production technologies aimed at improving working conditions, creating new business models and improving both productivity and the production quality of the plants

2020

Accreditation Scheme SAFERAIL® for EN 45545-2 Railway applications. Fire protection on railway vehicles. Requirements for fire behaviour of materials and components

2021

ISO 45001:2018 certification

2022

Upgrade production processes
 Certification EN ISO/IEC 27001 in progress
 Corporate organization carbon footprint certification ISO 14064-1 in progress



SERVICES

DESIGN

Feasibility analysis, specific acquisition and analysis, development and creation of hardware and software, product prototyping and engineering.

ASSEMBLY

Qualified personnel with IPC certifications manage our fully automatic, highly efficient, dynamic and flexible SMT-THT assembly line.

CONFORMAL COATING

Complete line for conformal coating of electronic boards. The plant guarantees the maximum support in every phase of the coating process, from the deposit of the product to its complete polymerization.

X-RAY INSPECTION

Service that makes it possible to control the finished product thanks to its very powerful focus and innovative image processing software. The real-time event log guarantees the traceability of the product.

BOARD WASHING

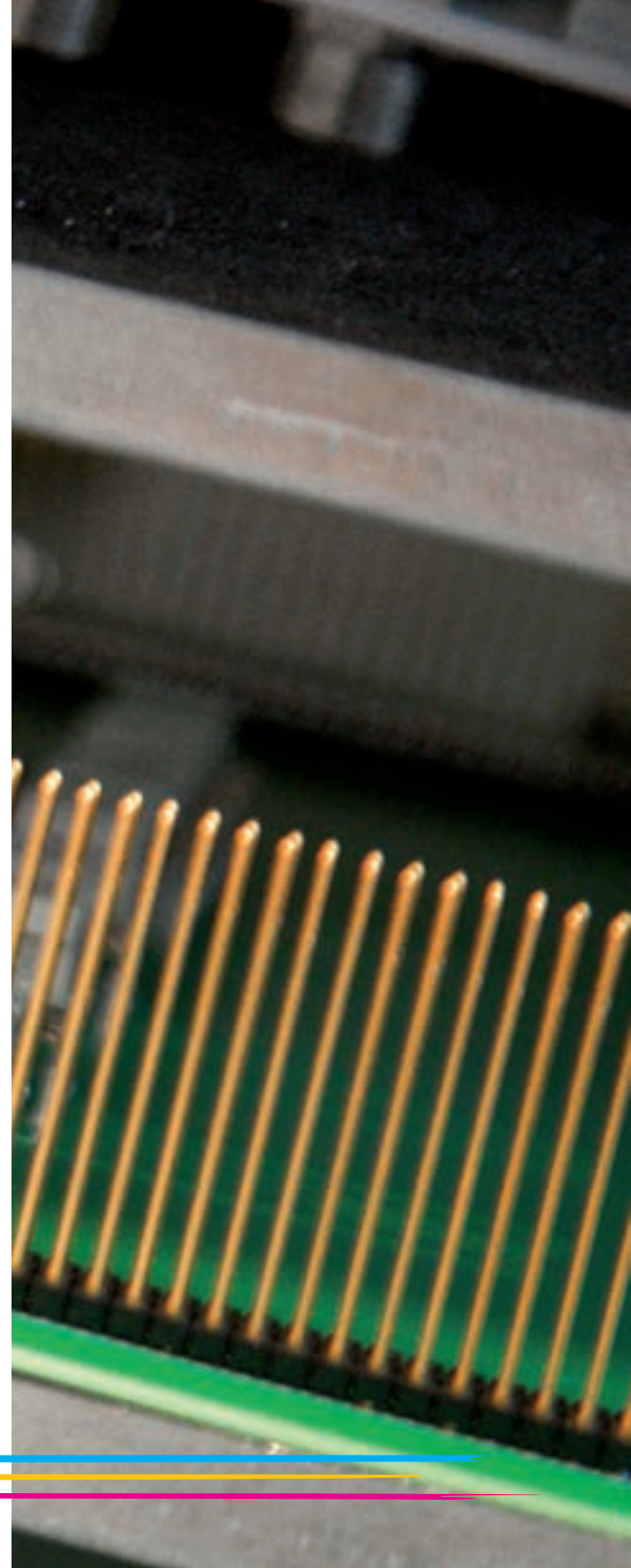
Automatic cleaning system for foils and electronic boards, one of the fundamental parameters for quality silk-screen printing.

LOGISTICS MANAGEMENT SUPPLIES

We deal with the management of purchases, materials, warehousing and stock consignment.

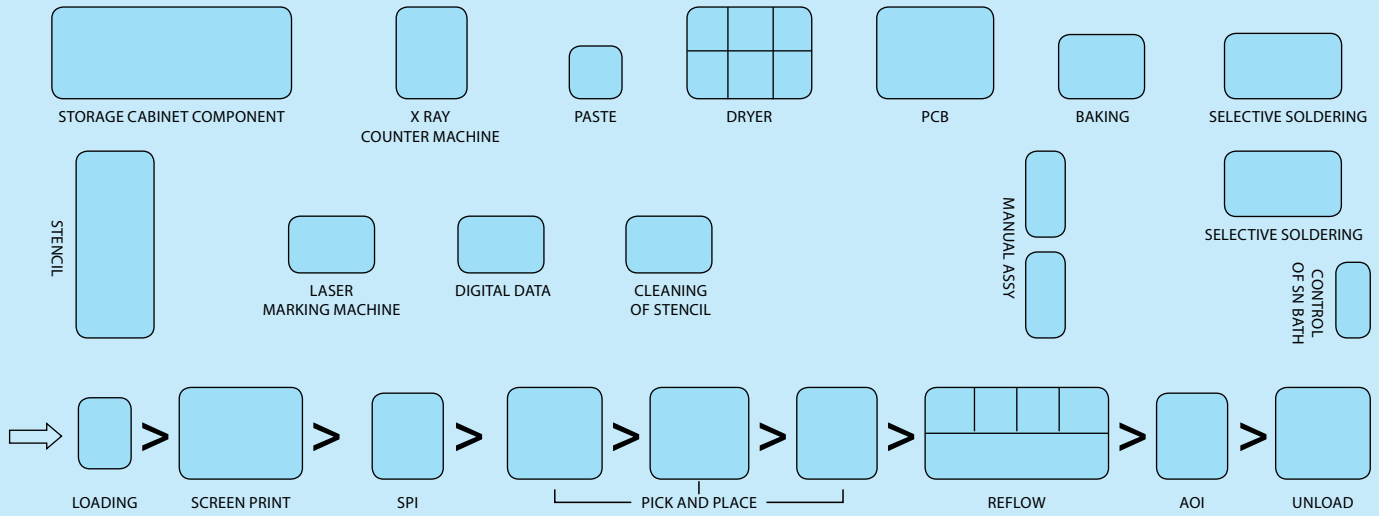
AFTER-SALES SERVICE

Management of warranty repairs, management of obsolescence, analysis of the interchangeability of obsolete components, re-engineering or re-design of products.

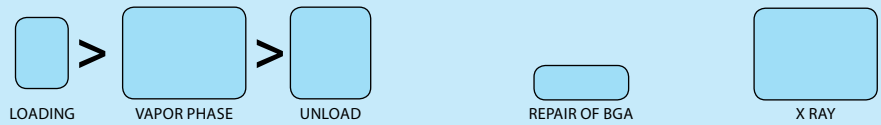




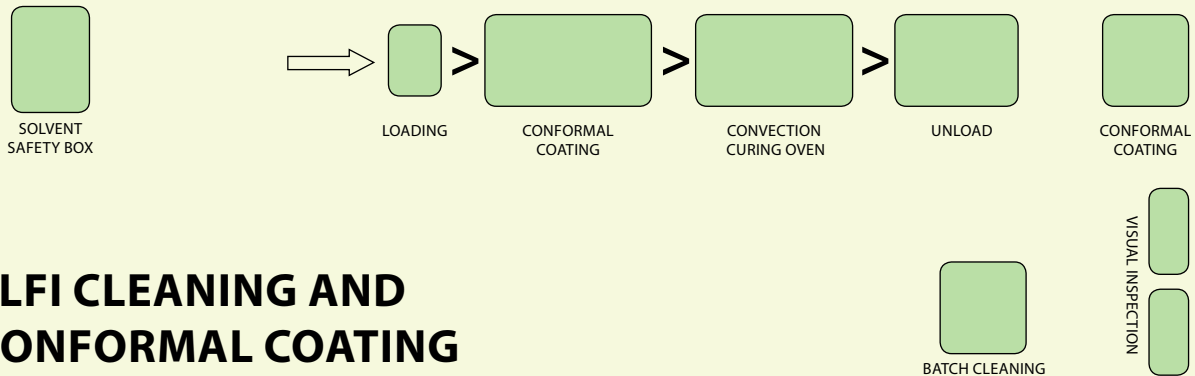
PRODUCTION PROCESSES



ELFI SOLDERING AND ASSEMBLY



ELFI CLEANING AND CONFORMAL COATING



CERTIFICATIONS

ELFI Srl is an ISO 9001:2015 certified company for the design and production of electrical and electronic equipment.

We use external accredited laboratories for the certification of our products.

Continuous investment in the certifications of our staff enables us to offer our customers high level skills and services.



Member

IPC-7711/7721
Certified IPC Trainer



Member

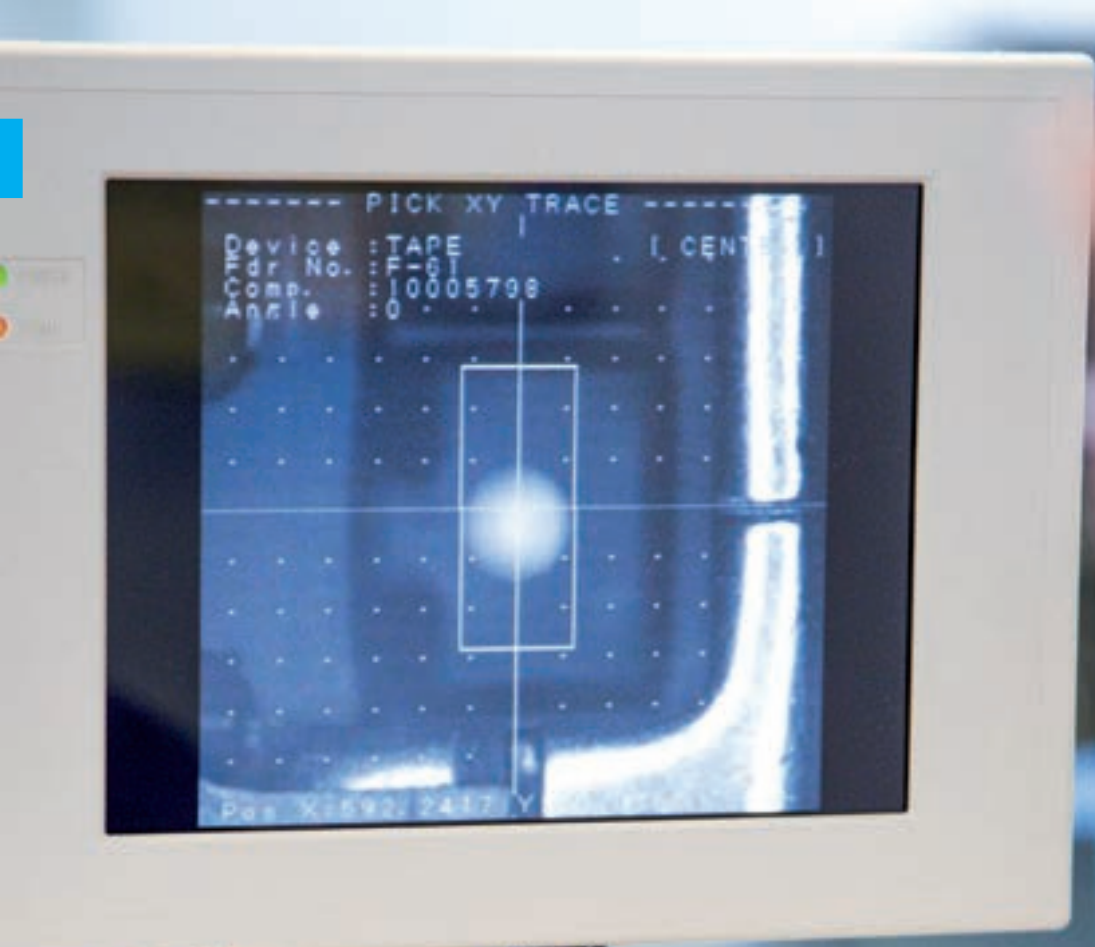
IPC-A-610
Certified IPC Trainer



Member

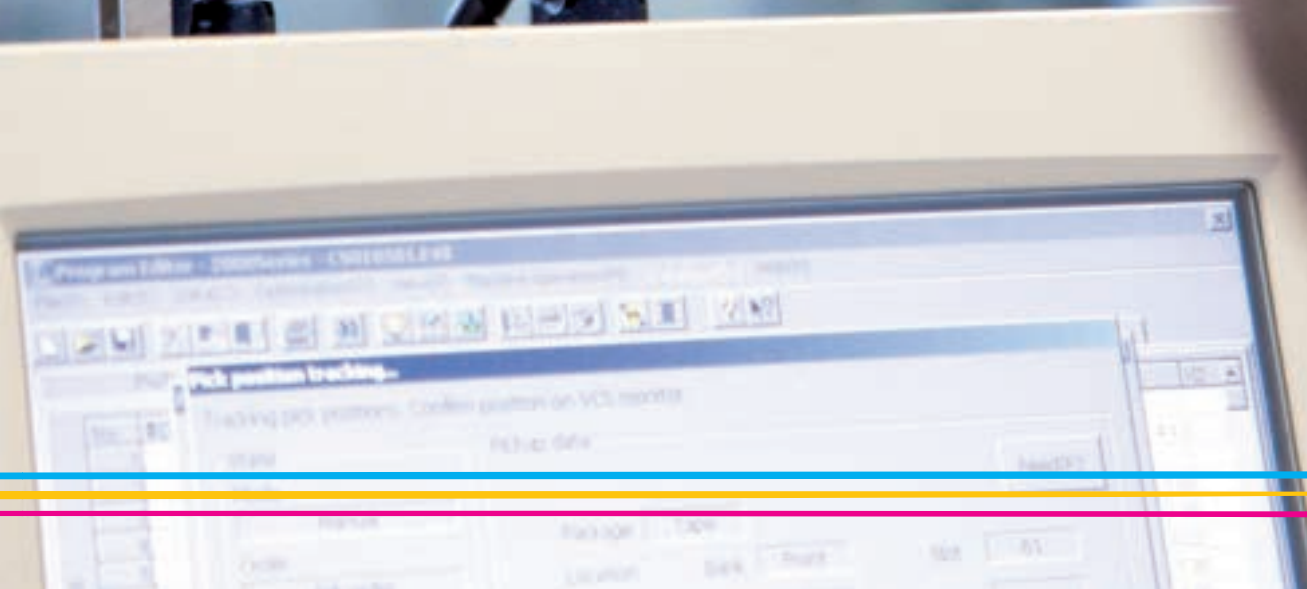
IPC-J-STD-001
Certified IPC Trainer





----- PICK XY TRACE -----
Device : TAPE (CENTER)
Addr. No. : F-6T
Comp. : 10005798
Angle : 0

Pos. X: 592, 2417 Y:



Program Editor - Datasheet - CH000001.vxl

Pick position tracking.
Tracking pick positions. Center position on VCL monitor

NAME	PICKUP DATE

NAME	PACKAGE	LOCATOR	DEK	THICK	SIZE	BT
	100V				100	BT



ELFI S.R.L. VIA PRATO, 42 • 51031 AGLIANA (PT) • ITALY • TEL. +39 0574 679328 • WWW.ELFISRL.COM